



Imperial Fastener Company

1400 SW 8th Street / Pompano Beach, Florida 33069
 Tel: 954-782-7130 / Fax: 954-782-0089 / email: info@imperialfastener.com

HOME

ABOUT US

CUBICLE CURTAINS

CUBICLE TRACKS

IV SUPPORT SYSTEMS

BREAK-A-WAY CURTAINS

SHOWER CURTAINS

BLACKOUT CURTAINS

ANTIMICROBIAL FINISHES

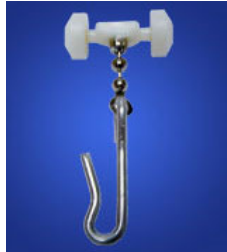
EXPORT

CONTACT US

TRACK | HARDWARE | INSTALLATION DETAILS SUSPENDED TRACK DETAILS | CUBICLE TRACK SPECIFICATIONS

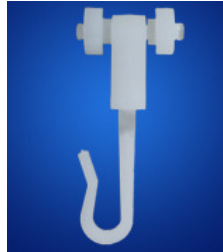
Hardware

IFC-100



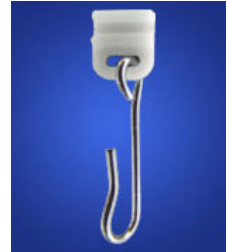
Nylon wheels and axle with bead chain and hard aluminum hook. Use with IFC-98

IFC-100N



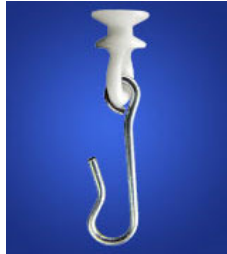
All nylon carrier. Use with IFC-98

IFC-300



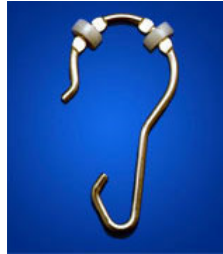
Nylon slider with plated spring steel hook. Use with IFC-69 and IFC-79

IFC-400



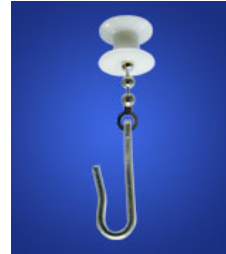
Nylon slider with plated spring steel hook. Use with IFC-50

IFC-500



Wire hook form with two nylon wheels. Use with IFC-70R or any 1" OD tubing

IFC-600



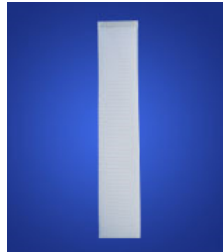
Nylon spool glide with hard aluminum hook. Use with IFC-98 or any C-Channel cubicle track

IFC-700



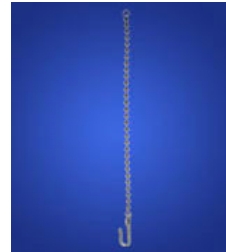
Nickel plated steel snap hook. Use with IFC-70R or any 1" OD tubing

Safety Tabs



4" long and 3/4" wide. For use with Break-A-Way track.

Drop Chain



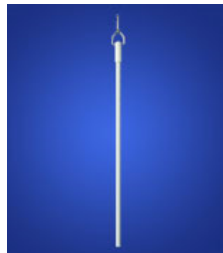
Stainless steel bead chain with hard aluminum hook and eyelet. Use on existing carrier. Lengths 6" 9" 12" 15" 18"

PVC Drops



With plated spring steel hook. Factory cut to required size.

Batons



3/8" Diameter fiberglass with snap hook. Lengths 3', 4', 5'

Tiebacks



Aluminum wall plate with pressure sensitive tape and 3/4" F/R polyester white strap. Strap is also available in matching curtain fabric.

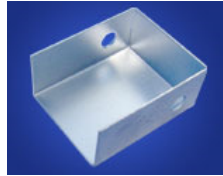
IFC-71B Shower Rod Bracket

IFC-98 End Cap

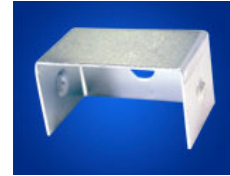
IFC-98 Snap Out



Two aluminum wall brackets with matching bright anodized finish. Furnished with matching hardware.



Also available in white

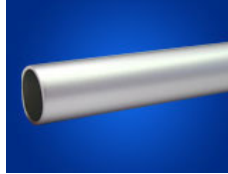


Also available in white

Suspended Hardware

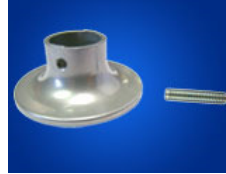
Used to mount IFC-98 track below the ceiling level.

Risers with Insert



1" OD satin anodized aluminum tubing with a factory installed 1/4" 20 threaded plug insert.

Ceiling Bracket



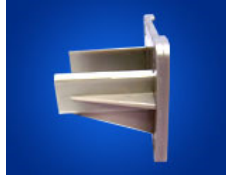
3" cast aluminum bracket with a 1/4" x 20 bolt to secure riser

Swivel Ceiling Bracket



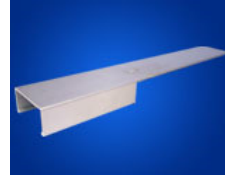
Used for sloped ceiling. Swivel allows risers to be perpendicular to the floor. Includes a 1/4" x 20 bolt to secure riser

Wall Bracket



Molded nylon supports suspended track at wall locations

Support Bridges



Satin anodized aluminum. Connects and supports 2 individual tracks. Right hand, left hand, "T" bridges available.